

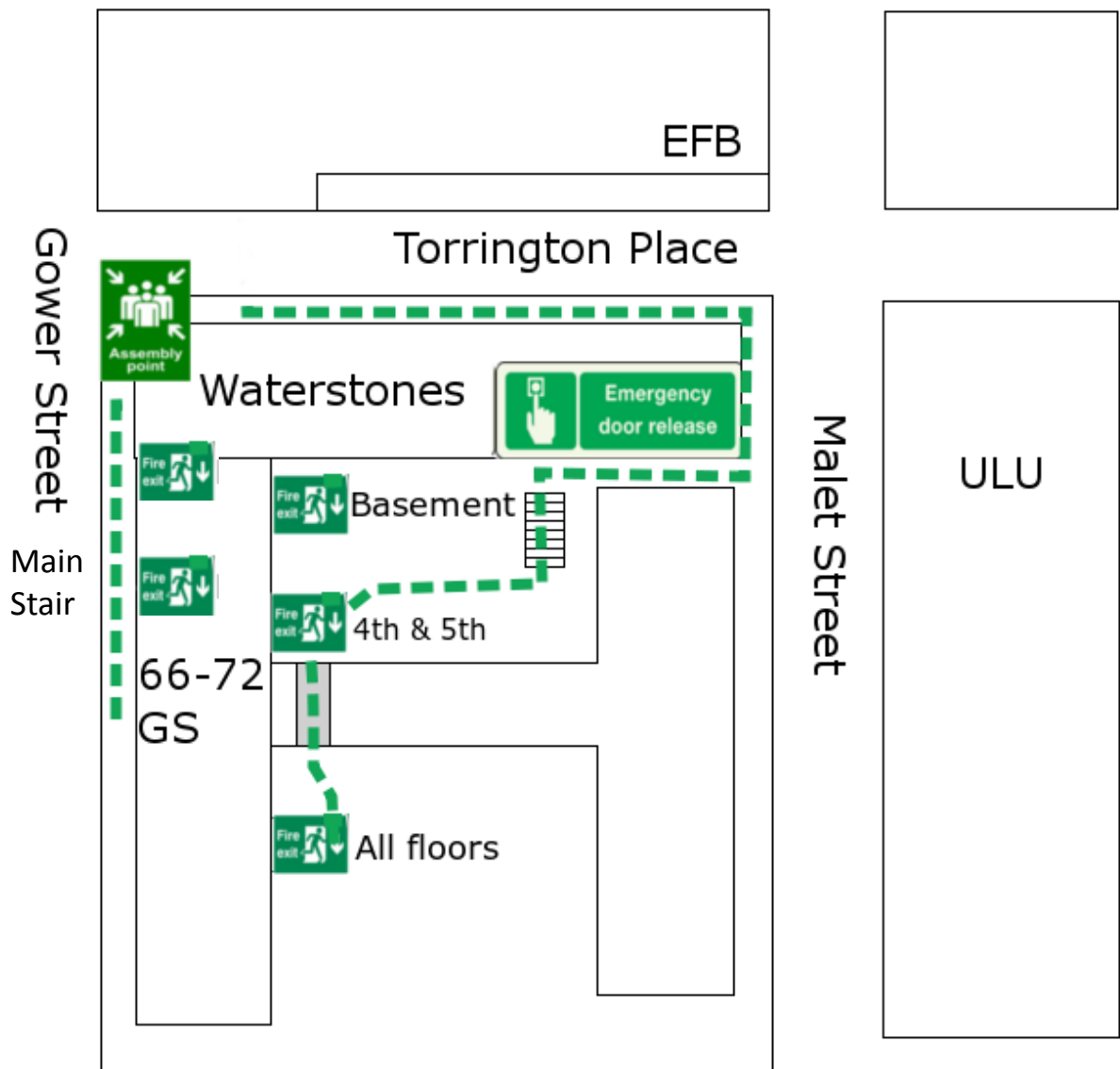
66-72 Gower Street

EMERGENCY EVACUATION

Exit Routes:

- 1) Main stair to Ground Floor front exit
- 2) South emergency staircase (all floors)
- 3) North emergency staircase (4th & 5th floors)
- 4) B09 exit into courtyard / front void

Assembly Point: Corner of Gower St & Torrington Pl



NOTES:

1) Main stair to Ground Floor front exit

The staircase will also serve as a fire refuge; please notify Security & FEMs if any of your visitors need assistance in an evacuation

2) South emergency staircase (all floors)

Use handrail, do not carry drinks.

3) North emergency staircase (4th & 5th floors)

Located through doorway to toilets

4) B09 exits into courtyard or front void

For rear fire exits, follow the signs and continue through the courtyard to exit onto Malet Street.